

THE *Spigo*  
*Fairmont*  
PALM RESIDENCE

---



**Mr. Clive Geisler**  
**IFA Hotels and Resorts**  
**Agent for Fairmont Golden Mile and Palm Residence**  
**on the Palm Island Jumeirah in Dubai, UAE**

Dubai Tel/Fax: +971-(0)4 3999 726

Dubai Mobile: +971-(0)50 656 8948

London Tel: +44-(0)208-150-6767

Toronto Tel: +1-(647)-477-6743

Email: [clive@mgel.com](mailto:clive@mgel.com)

[www.ThePalmDubai.com](http://www.ThePalmDubai.com)

For the best selection of both developer direct and re-sale luxury apartments and villas on the Palm Islands of Dubai, for the most up to date news and information about the property market, for unparalleled customer service and for the inside track on new launches, click first on [www.ThePalmDubai.com](http://www.ThePalmDubai.com)



[www.ThePalmDubai.com](http://www.ThePalmDubai.com)



## DUBAI

### A PREMIERE LOCATION

Quickly becoming one of the world's most popular destinations, Dubai is attracting visitors from around the world. With its warm climate, landmark architecture, sporting events, fine dining and world-class entertainment, Dubai has something for everyone.

With direct flights to most international locations, Dubai is the perfect location for a short vacation or an extended trip. Surrounded by the picturesque Arabian Gulf, desert dunes, and every modern convenience, Dubai is becoming the ideal place for an ideal home.





## THE PALM

LIVE THE 8TH WONDER OF THE WORLD

Imagine the world's largest man-made island in the shape of a palm tree. An unrivaled feat of engineering, architecture and planning. A place where luxury meets design, dreams meet reality and the extraordinary becomes possible. We invite you to become part of a legend in the making.

[www.ThePalmDubai.com](http://www.ThePalmDubai.com)







## THE TRUNK OF THE PALM

WHERE EVERYTHING HAPPENS

The Palm Jumeirah Trunk is the hub of the island. It will be connected to a monorail system ensuring the convenience of residents, guests and tourists. Measuring 450 metres wide, with a central canal, The Trunk will be home to five-star hotels, beaches, luxury apartment buildings, marinas, Village Centre, restaurants, cafes and a variety of retail outlets. Perhaps the most prestigious of all elements on The Trunk is The Golden Mile.

[www.ThePalmDubai.com](http://www.ThePalmDubai.com)





## THE GOLDEN MILE OVERVIEW

The Golden Mile will encompass some of The Palm's premiere retail shops and residences. Upscale boutiques and cafes will create an exclusive Corniche walkway, which fronts a collection of extraordinary homes for the most discerning buyer.



## PREMIERE SHOPPING

THE GOLDEN MILE RETAIL

220 of the world's most upscale stores and restaurants will make up The Golden Mile Retail, from designer boutiques, outdoor cafes, luxury shops, and formal dining. Providing the ultimate shopping experience amidst an unrivalled waterfront setting, The Golden Mile is certain to become an exciting destination for residents and visitors alike.

[www.ThePalmDubai.com](http://www.ThePalmDubai.com)







## PREMIERE LIVING

THE GOLDEN MILE RESIDENCES

The Golden Mile Residences will showcase ten waterfront buildings, featuring a range of spectacular homes. Offering everything from 1 bedroom apartments to penthouses and town homes, this collection of approximately 780 apartments will benefit from unmatched services, views and design. What's more, you can be confident you are dealing with a single full service provider. From first buying to later managing and maintaining your Golden Mile home through an international Five Star hotel operator, you can expect an experienced and professional organization that truly understands the importance of buying a home.

[www.ThePalmDubai.com](http://www.ThePalmDubai.com)





## ATTENTION TO DETAIL

The Golden Mile Residences have been designed to satisfy the most discerning buyer. From apartment buildings with exclusive lobbies for enhanced privacy, to town homes which feature private garages and off-street front doors, The Golden Mile Residences have left no detail to chance.

Interiors have been crafted with the same commitment to excellence. Bedrooms feature ceramic floors, spacious walk-in closets, insulated and double-glazed windows and tiled balconies. Bathrooms have ceramic floors, high quality vanities, safety glass shower enclosures and granite countertops. Kitchens are equipped with track lighting, highest quality cabinetry, select granite tops and a twin bowl stainless steel sink with quality mixer tap.





## UNMATCHED SERVICE AND AMENITIES

The Golden Mile Residences benefit from an extensive range of services provided by the neighboring Palm Hotel & Resort, both of which are managed by the same internationally known hospitality operator. These include a club with membership access, private beach, swimming pool, modern health club, children's playground and restaurant/cafes, apartment servicing, housekeeping and maintenance, maid and childcare services, owners' reception area with concierge and security for a nominal fee.

There will also be a management available for the condominium and owners association ensuring buyer's involvement, as well as rental administrative systems.



THE PALM JEBEL ALI



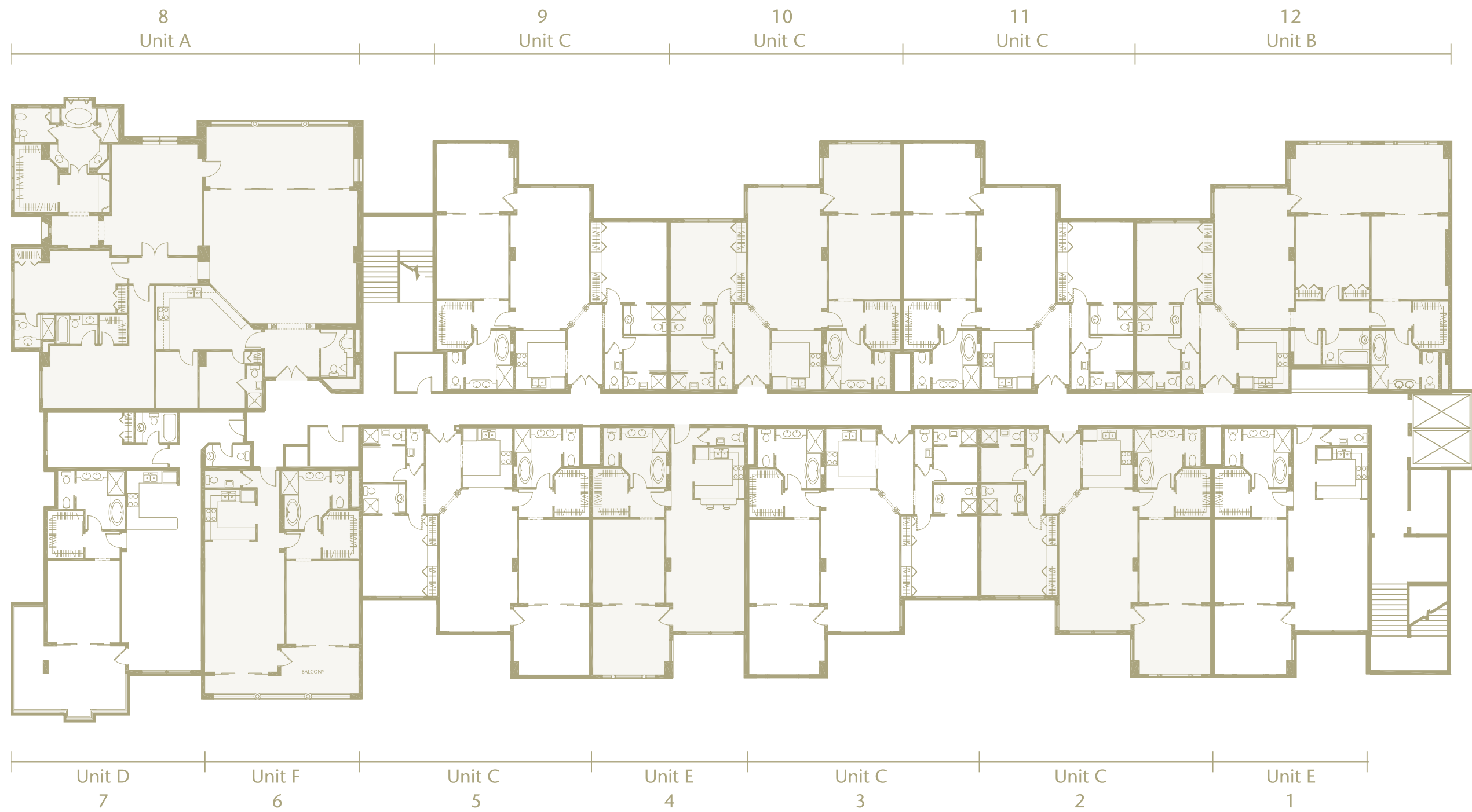
## NAKHEEL TRANSFORMING DUBAI

Nakheel Properties, creators of The Palm, are Dubai's premier development company. Nakheel echoes the city's ambitious rise with a passion and imagination that delivers a portfolio of projects which redefine home, holiday and investment.



[www.ThePalmDubai.com](http://www.ThePalmDubai.com)

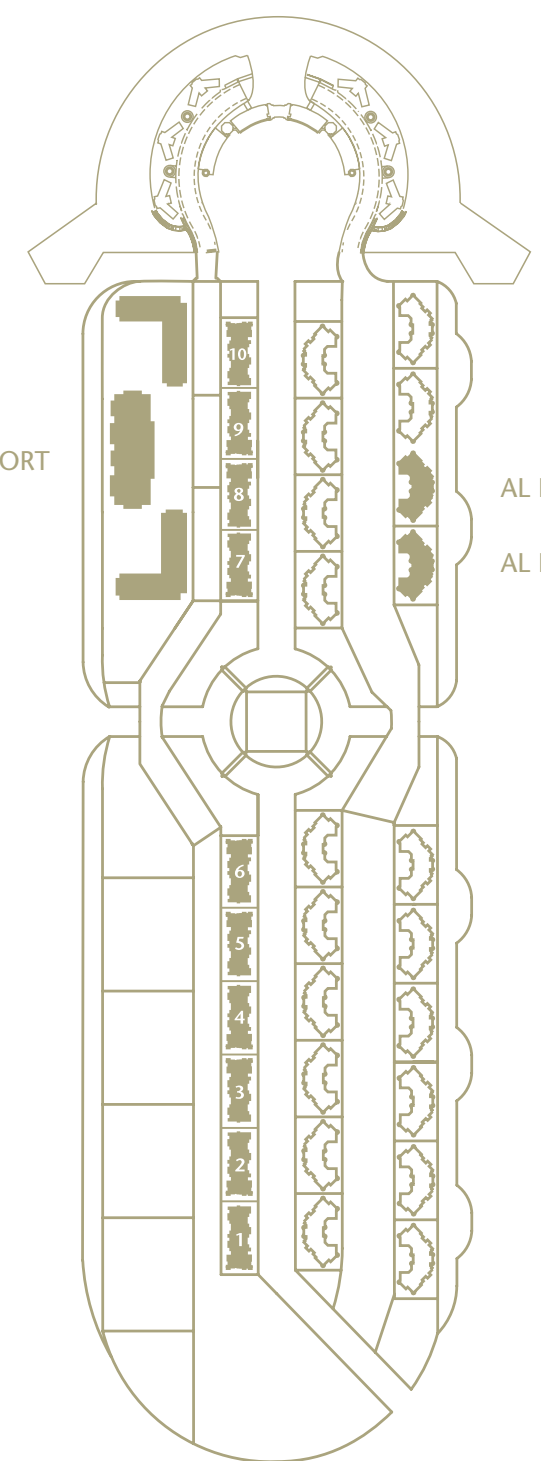




APARTMENT LEVEL 1 TO 6  
[www.ThePalmDubai.com](http://www.ThePalmDubai.com)

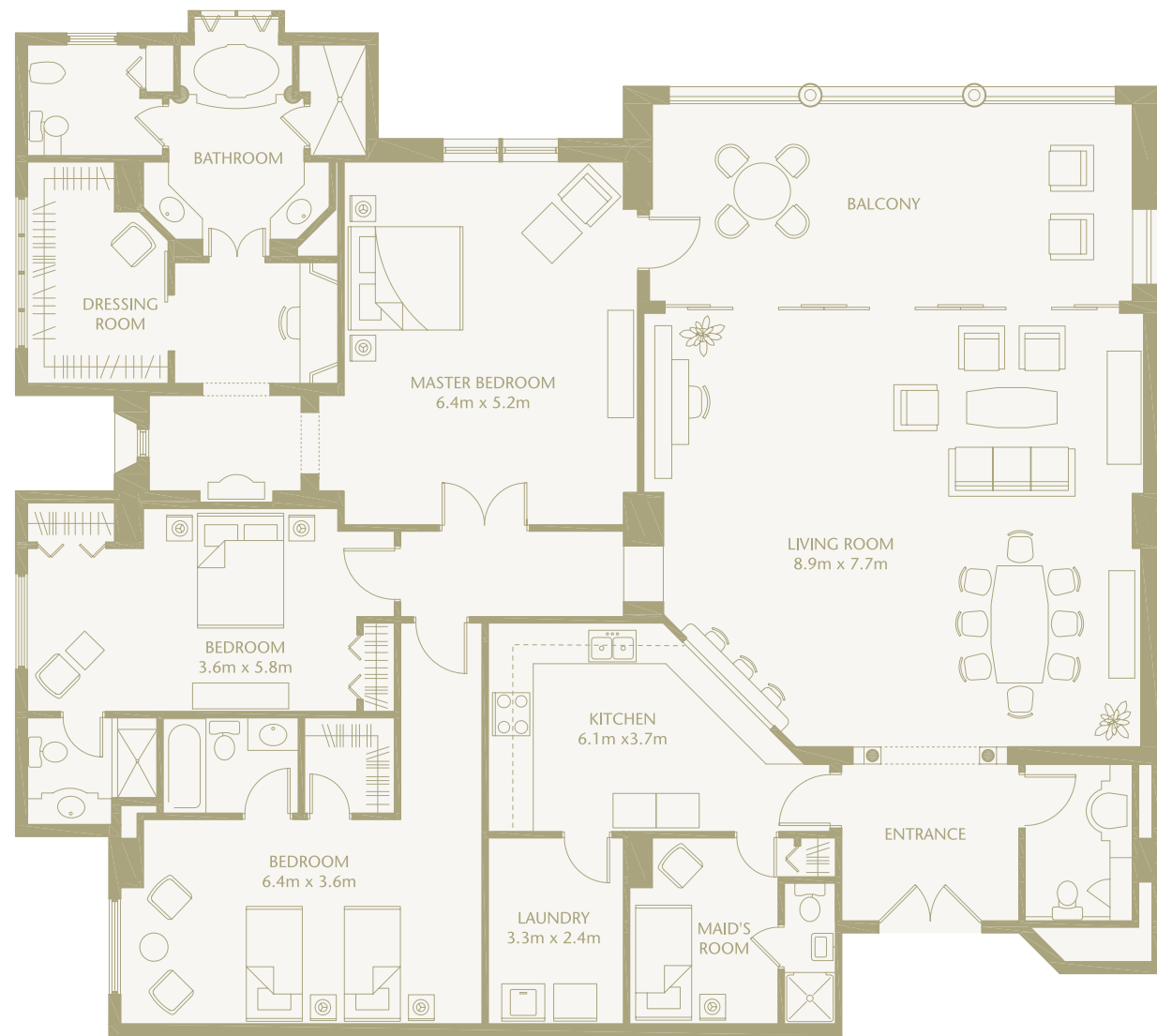
Actual usable floor space may vary from the value stated. The developer reserves the right to make revisions. All measurements, drawings and materials are approximate. The information is subject to change without notice. Do not scale drawing. Computer Renderings displayed are an artistic representation of the project. Variations may occur.

THE PALM  
 HOTEL & RESORT



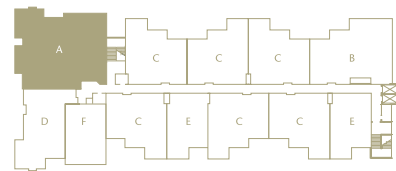
AL NABAT  
 AL HASEER

GOLDEN MILE BUILDING 1-10



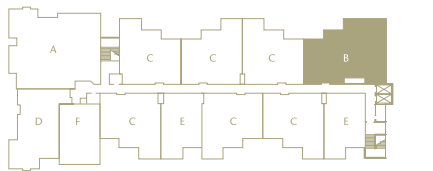
**UNIT A**  
3 BEDROOM PREMIUM

TOTAL AREA: 325 SQ. M. / 3499 SQ. FT.  
[www.ThePalmDubai.com](http://www.ThePalmDubai.com)



**UNIT B**  
3 BEDROOM DELUXE

TOTAL AREA: 228 SQ. M. / 2454 SQ. FT.

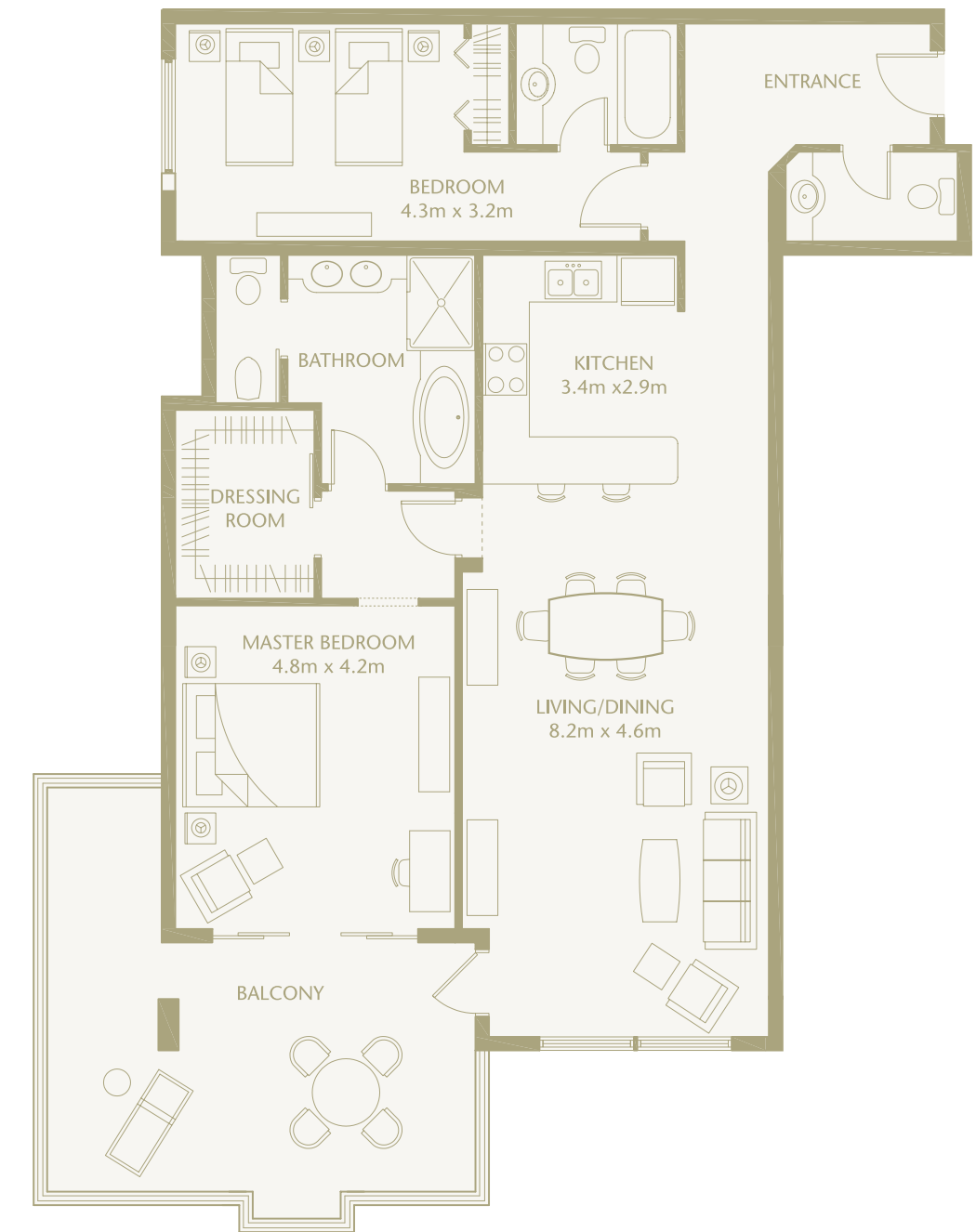
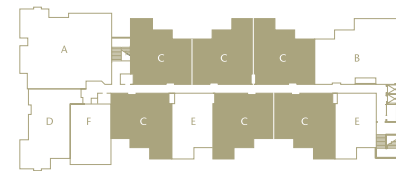






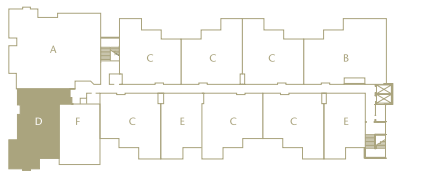
**UNIT C**  
2 BEDROOM PREMIUM

TOTAL AREA 166 SQ. M. / 1787 SQ. FT.  
[www.ThePalmDubai.com](http://www.ThePalmDubai.com)



**UNIT D**  
2 BEDROOM DELUXE

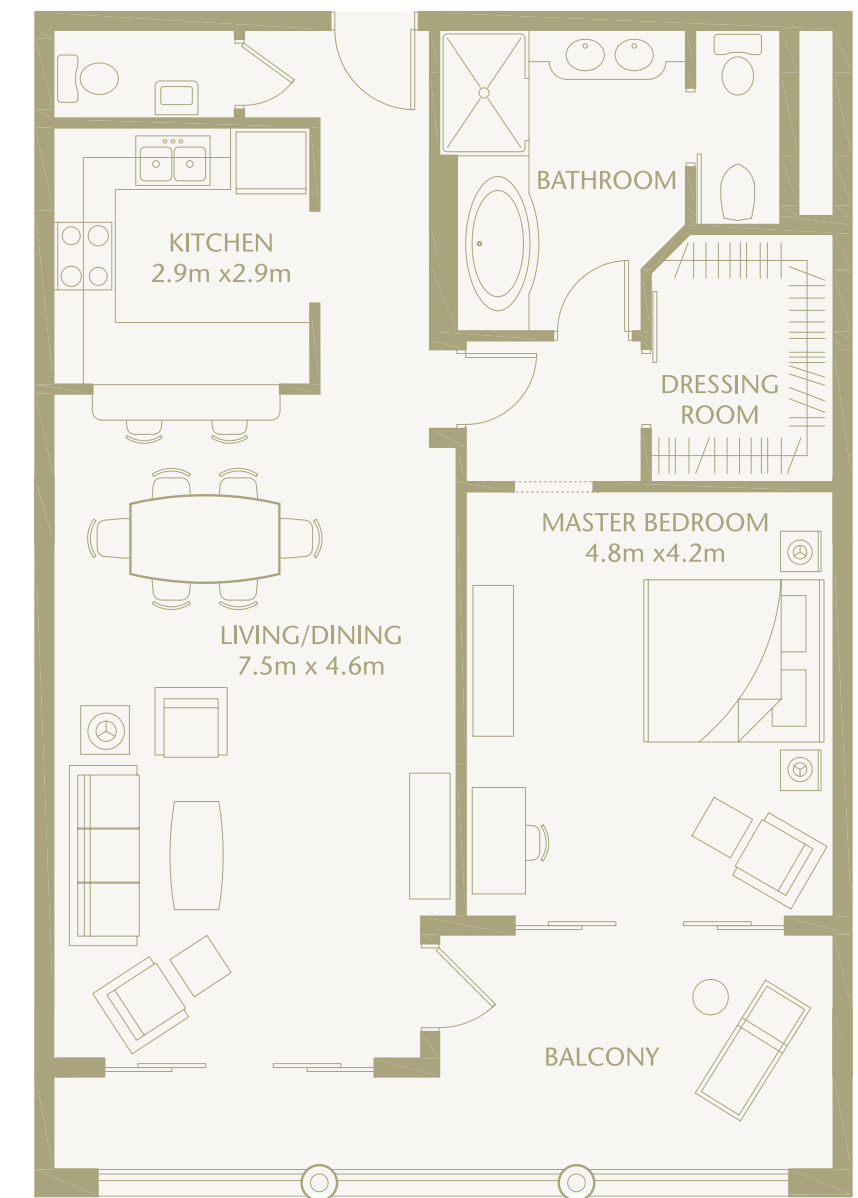
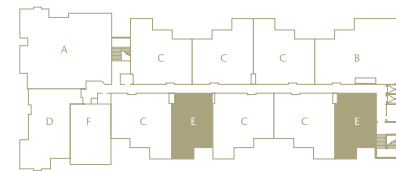
TOTAL AREA 174 SQ. M. / 1874 SQ. FT.





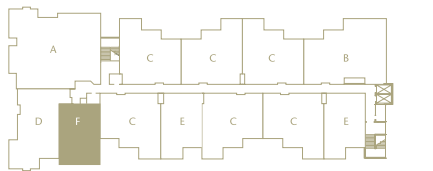
**UNIT E**  
1 BEDROOM PREMIUM

TOTAL AREA 122 SQ. M. / 1313 SQ. FT.  
[www.ThePalmDubai.com](http://www.ThePalmDubai.com)



**UNIT F**  
1 BEDROOM DELUXE

TOTAL AREA 123 SQ. M. / 1324 SQ. FT.







A city on the rise, the bold new landscape of Dubai is emerging, one of landmark architecture, pristine beaches, and luxury hotels. Now, with the creation of The Palm, this extraordinary vision joins Dubai's icons of design, luxury, and hospitality.

- 1 THE PALM, JUMEIRAH
  - 2 THE PALM, JEBEL ALI
  - 3 THE WORLD
  - 4 JUMEIRAH ISLANDS
  - 5 GARDENS SHOPPING MALL
  - 6 THE GARDENS
  - 7 JEBEL ALI FREEZONE
  - 8 JUMEIRAH LAKE TOWERS
  - 9 INTERNATIONAL CITY
- [www.ThePalmDubai.com](http://www.ThePalmDubai.com)



للفنادق والمنتجعات  
HOTELS & RESORTS

